

# SONGS AND USEFUL VIDEOS

- Hello song: <https://www.youtube.com/watch?v=fN1Cyr0ZK9M>
- What's the weather like?: <https://www.youtube.com/watch?v=Jn7uAsLWXpk>
- Make a circle: <https://www.youtube.com/watch?v=ALcL3MuU4xQ>
- Who took the cookie?: <https://www.youtube.com/watch?v=OzKY5YHnOTg>
- Days of the week: <https://www.youtube.com/watch?v=mXMofxtDPUQ>
- I wake up: <https://www.youtube.com/watch?v=eUXkj6j6Ezw>
- Shapes (longer video): <https://www.youtube.com/watch?v=JBBmJb9-KHw>
- Greenman: [https://www.youtube.com/playlist?list=PLbxVpmDW1oJSy-piKbHpa6tnpX7pzM4\\_w](https://www.youtube.com/playlist?list=PLbxVpmDW1oJSy-piKbHpa6tnpX7pzM4_w)

# VOCABULARY

- Numbers: from 0 to 40.
- Colors: red, orange, yellow, green, blue, purple, pink, grey, brown, black, white.
- Shapes: circle, triangle, rectangle, square, diamond, oval, heart, star.
- Other concepts: near/far, quiet/loud, days and months.
- Weather: sunny, cloudy, windy, snowy, rainy, hot, cold.

## Parts of the house:

- Kitchen.
- Living room.
- Dinning room.
- Bathroom.
- Garden.
- Bedroom.
- Garage\*

## Daily routines:

- Get/wake up.
- Wash the face.
- Eat breakfast.
- Brush the teeth.
- Comb the hair.
- Get dressed.
- Go to the school.

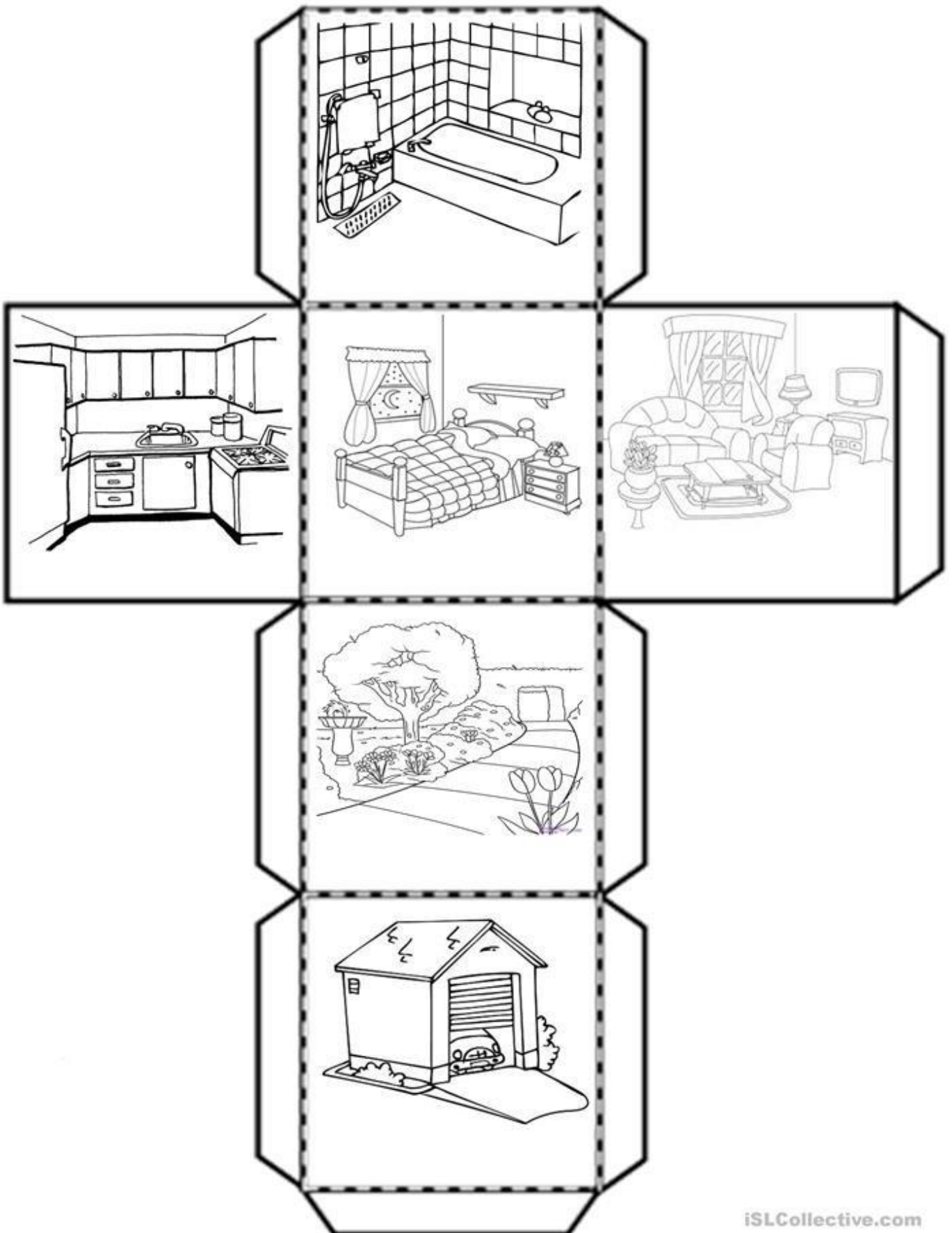
## Jobs and places:

- Fireman/fire station.
- Teacher/School.
- Doctor/hospital.
- Shop assistant/shop.
- Waiter/restaurant.
- Policeman/playground or police station.

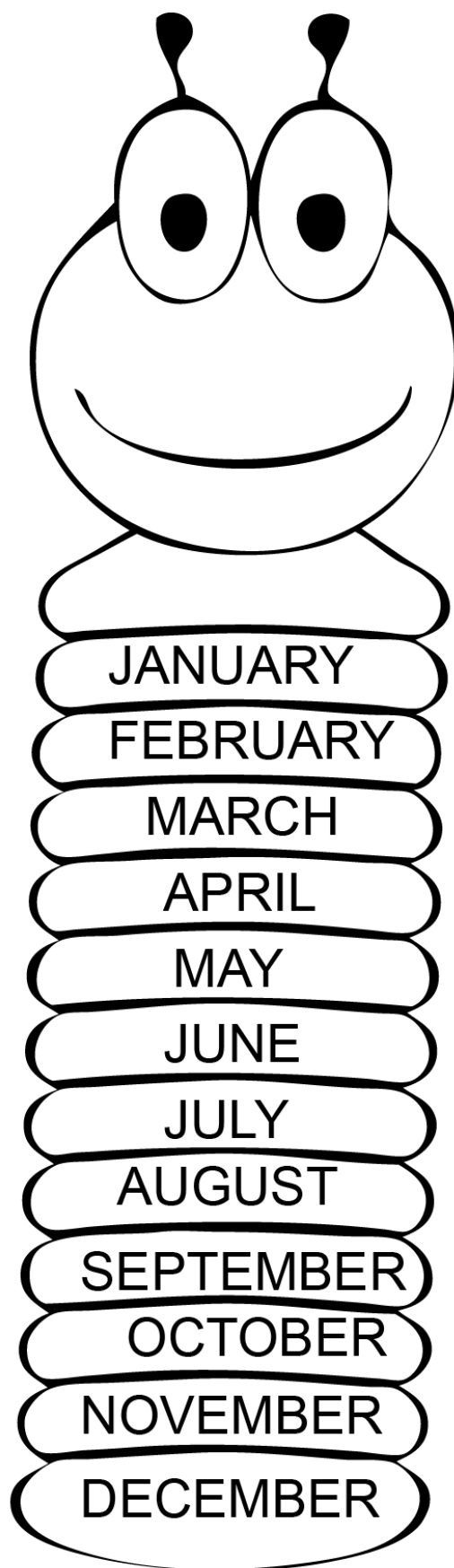
## Transport:

- Car.
- Bus.
- Taxi.
- Train.
- Airplane.
- Boat

Cut and stick to make a cube. Play and say the parts of the house



# MONTHS OF THE YEAR



# Color LOUD

Name: \_\_\_\_\_

Class: \_\_\_\_\_

Color all the things that make a loud sound, then trace LOUD below.



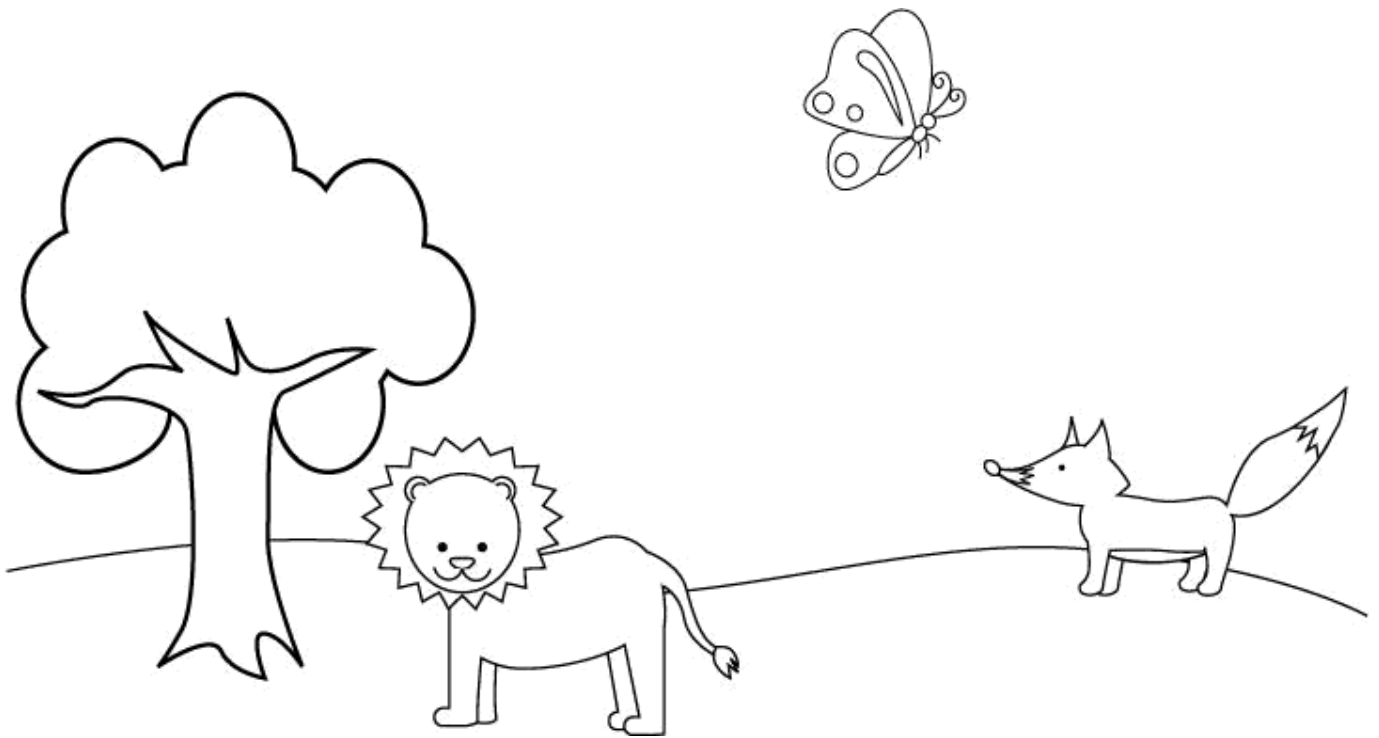
LOUD



# Near or Far Worksheet

---

Circle the animal that is near the tree.



**The Days of the Week are**



**Monday**

**Tuesday**

**Wednesday**

**Thursday**

**Friday**

**Saturday**

**Sunday**

**Today is** \_\_\_\_\_.



Match the jobs with the places. Say the words.



○



○



○



○



○



○



○



○



○



○



○



○

Follow the way in the correct order and say the name of the transports.

